

Installer for DataEase

1. Installation

2. Usage

3. Terms & Conditions

Installer for DataEase

Installation

To install the application please carry out the following:-

- Unzip the “Install.zip” file into a new folder.
- Open a DataEase application and navigate to the Catalog and Select “Application\Utilities\Install”, for the install type select “From Command File”. *(Please see Known Issues first)*
- Navigate to the folder that holds the zip file contents and select the DIW file then click on the OK button.
- Import Relationships using the “Add All” facility from file “Relation.txt” into system form “Relationships”.
- Import CDF data using “Add or Update Records” from file “CDF.txt” into system form “Custom Defined Functions”.
- Place the contents of the Files folder into the application folder.
- Reorganize the database using the following method:-
Navigate to the Catalog and Select “Application\Utilities\Reorganize Form”
Select “Reorganize All” then click the OK button.
- Close DataEase fully and then reopen.

To view DataEase system forms please make sure that option “Show System Forms” has been ticked in Application Preferences.

Known Issues

When installing DIW files you will need to lock the database application first before running the installation process otherwise forms installed with data may install corrupted.

If you install forms which contain fields with the Lookup function the fields will install as normal text fields and therefore you will need to adjust them after the DIW installation is complete.

You may receive a CDF error message when first using this application. The problem has been caused by having both “MakeDirOS” and “MakeDir” installed at the same time. To correct the problem please remove CDF “MakeDirOS” from the CDF system form.

Installer for DataEase

General

Installer for DataEase should be treated as a Database within a database. Always insure that you have a backup copy of your application first before installing any DIW files or importing data.

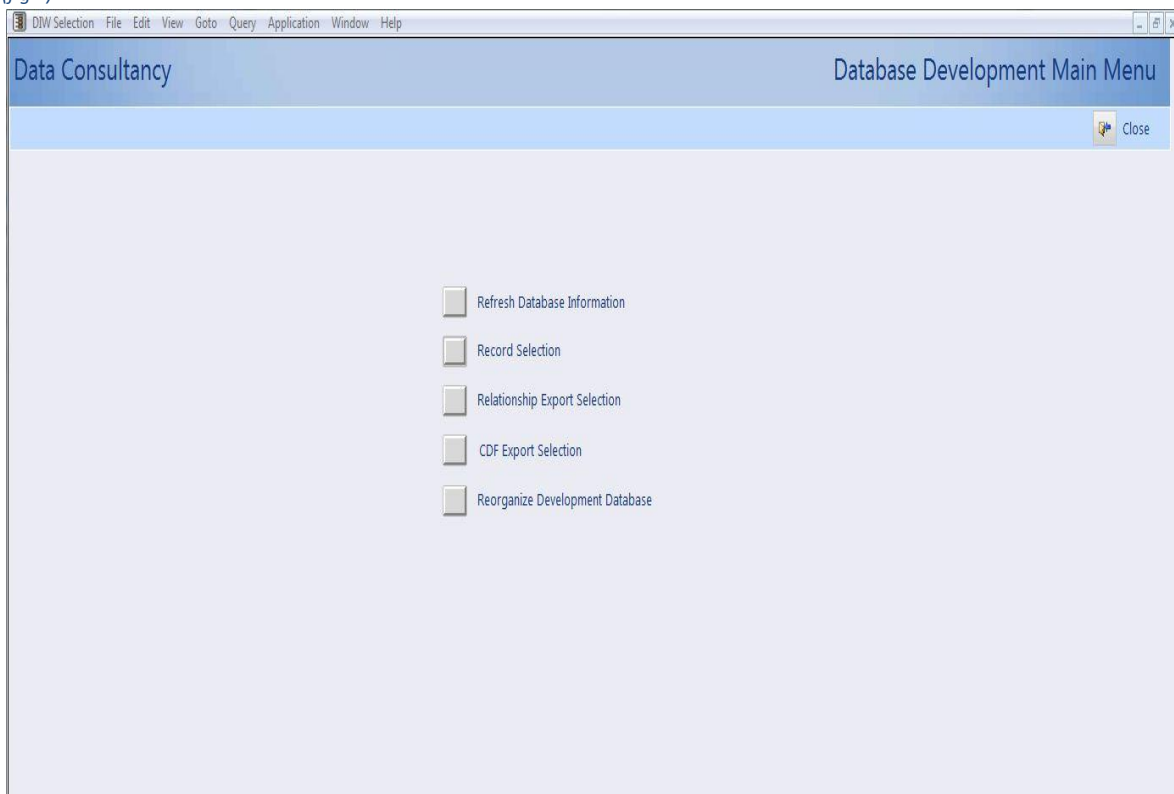
Installer is an application which has been developed in DataEase version 7.1 and therefore will not be compatible with earlier versions of DataEase. Once Installer has been installed into a DataEase database you will be able to create DIW files, Relationship and CDF export files.

To access the programs menu open the Catalog page and double click on form **mDevelopMain** which will open the menu below.

Before creating any export files you should always run [Refresh Database Information](#) first which will refresh all the applications information in DataEase system forms.

Menu

(fig 1)



Installer for DataEase

Create DIW Files

When you select the above option from the menu a DIW selection form will open and display all the applications Forms, Views, Reports and Procedure information as per fig2. The buttons at the top of the page allow you to filter the list as required.

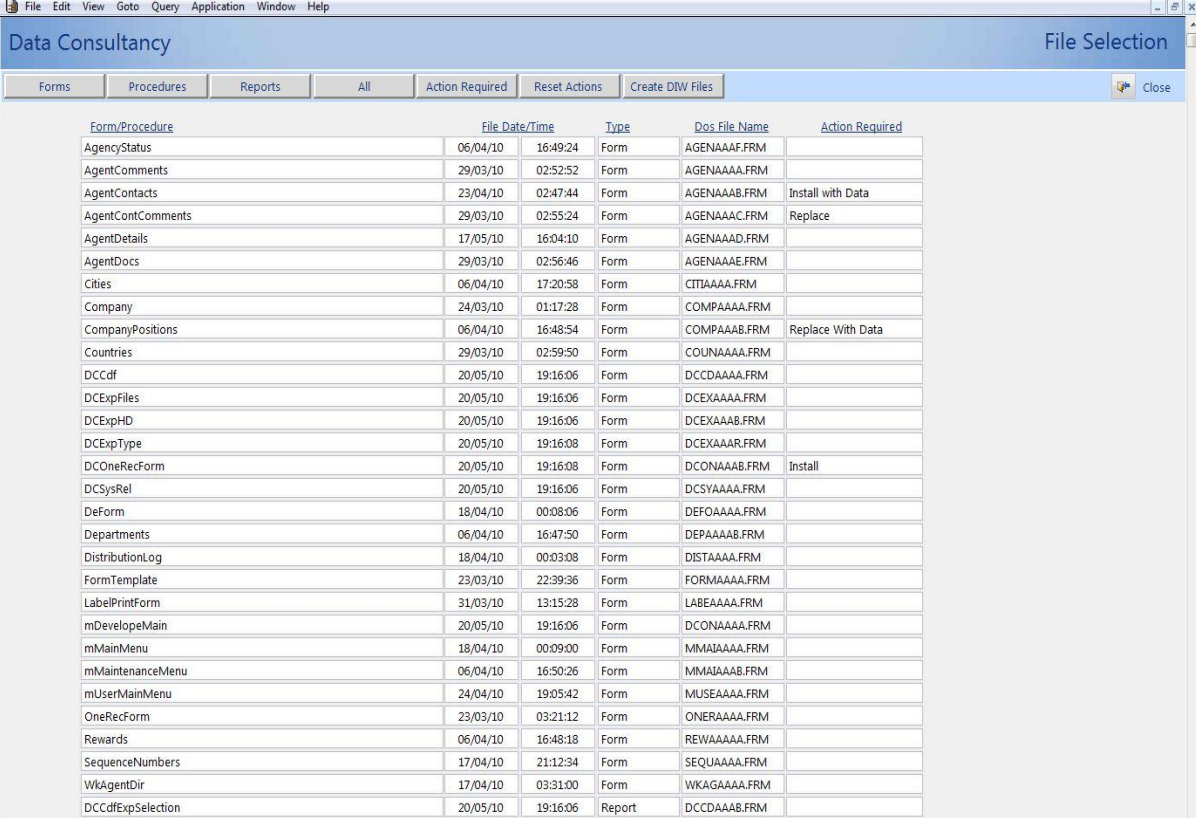
To include an item in your DIW file you need to firstly find the Form, View, Report or Procedure, in the list and then click on the item this will open the File Selection Screen (*see fig3*). You can select the export type from the following four options:-

- Install
- Install With Data
- Replace
- Replace With Data

If you select a Report, Procedure or View to be included in the DIW file then Installer will only display the options to Replace or Install. Once you have made your selection click on the Save Changes button and that will return you to the DIW Selection screen.

Once you have selected all the items to be included in your DIW file click on the [Create DIW File](#) button, Installer will create the DIW text file and copy all relevant files from the application folder to a subfolder called Installs.

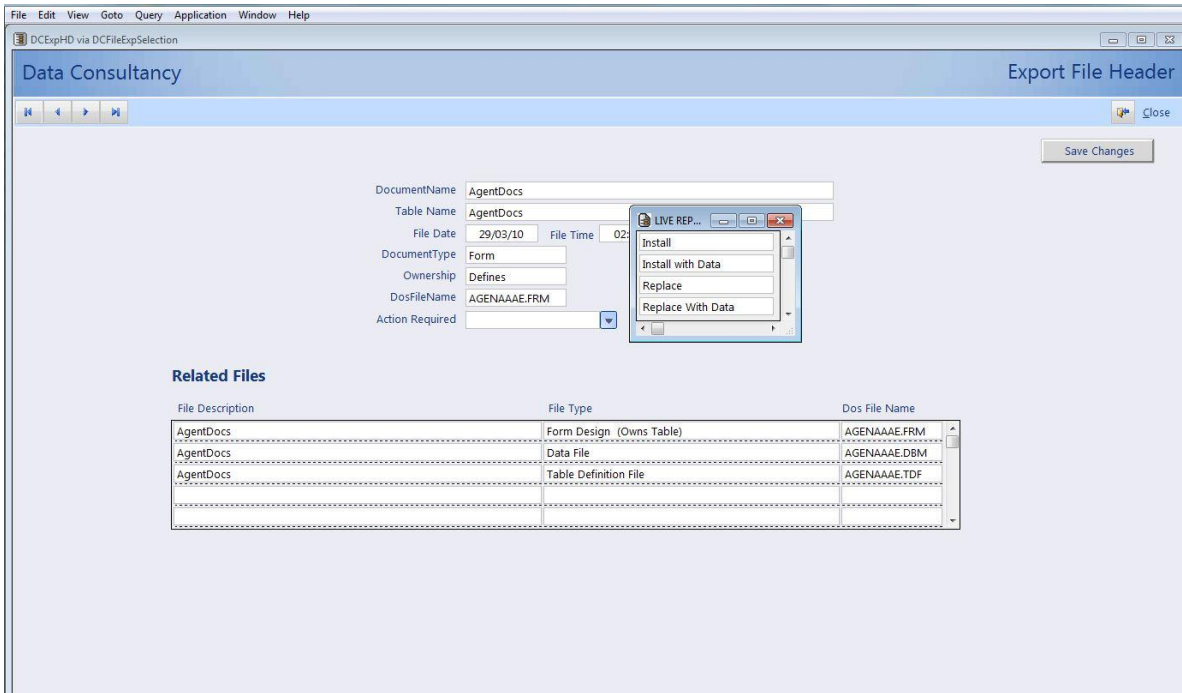
(fig 2)



Form/Procedure	File Date/Time	Type	Dos File Name	Action Required
AgencyStatus	06/04/10 16:49:24	Form	AGENAAAF.FRM	
AgentComments	29/03/10 02:52:52	Form	AGENAAAA.FRM	
AgentContacts	23/04/10 02:47:44	Form	AGENAAAB.FRM	Install with Data
AgentContComments	29/03/10 02:55:24	Form	AGENAAAC.FRM	Replace
AgentDetails	17/05/10 16:04:10	Form	AGENAAAD.FRM	
AgentDocs	29/03/10 02:56:46	Form	AGENAAAE.FRM	
Cities	06/04/10 17:20:58	Form	CITIAAAA.FRM	
Company	24/03/10 01:17:28	Form	COMPAAAA.FRM	
CompanyPositions	06/04/10 16:48:54	Form	COMPAAAB.FRM	Replace With Data
Countries	29/03/10 02:59:50	Form	COUNAAAA.FRM	
DCCdf	20/05/10 19:16:06	Form	DCCDAAAA.FRM	
DCExpFiles	20/05/10 19:16:06	Form	DCEXAAAA.FRM	
DCExpHD	20/05/10 19:16:06	Form	DCEXAAAB.FRM	
DCExpType	20/05/10 19:16:08	Form	DCEXAAAR.FRM	
DCOneRecForm	20/05/10 19:16:08	Form	DCONAAAB.FRM	Install
DCSysRel	20/05/10 19:16:06	Form	DCSYAAAA.FRM	
DeForm	18/04/10 00:08:06	Form	DEFOAAAA.FRM	
Departments	06/04/10 16:47:50	Form	DEPAAAAAB.FRM	
DistributionLog	18/04/10 00:03:08	Form	DISTAAAA.FRM	
FormTemplate	23/03/10 22:39:36	Form	FORMAAAA.FRM	
LabelPrintForm	31/03/10 13:15:28	Form	LABEAAAA.FRM	
mDevelopMain	20/05/10 19:16:06	Form	DCONAAAA.FRM	
mMainMenu	18/04/10 00:09:00	Form	MMAIAAAA.FRM	
mMaintenanceMenu	06/04/10 16:50:26	Form	MMAIAAAB.FRM	
mUserMainMenu	24/04/10 19:05:42	Form	MUSEAAAA.FRM	
OneRecForm	23/03/10 03:21:12	Form	ONERAAAA.FRM	
Rewards	06/04/10 16:48:18	Form	REWAAAAA.FRM	
SequenceNumbers	17/04/10 21:12:34	Form	SEQUAAAA.FRM	
WkAgentDir	17/04/10 03:31:00	Form	WKAGAAAA.FRM	
DCCdfExpSelection	20/05/10 19:16:06	Report	DCCDAAAB.FRM	

Installer for DataEase

(fig 3)



Installer for DataEase

Relationships Export Selection

This facility allows you to create an export file containing select Relationships. To include an item in your Relationships Export file you need to firstly select the relationship from the selection list (see fig 4) by clicking on the item which will open the Selection Screen (see fig5). Once you have select “Yes” click on the Save Changes button at the top of the page which will save your selection and return you to the Relationships selection screen.

When you have selected all the items to be included in your export file click on the **Create Export File Button** and Installer will create a Tilde (~) separated export file called *Relation.txt* in the Installs folder.

(fig 4)

Form 1	Form 2	Named Relationship 1	Named Relationship 2	Export	
AgentContacts	AgentContComments	AgentNumber Fullname	AgentNumber Fullname	rAgentContacts rAgentContComms	yes
AgentDetails	AgentContacts	AgentNumber	AgentNumber	rAgentDetails rAgentContacts	
AgentDetails	AgentComments	AgentNumber	AgentNumber	rAgentDetails rAgentComments	yes
AgentDetails	AgentDocs	AgentNumber	AgentNumber	rAgentDetails rAgentDocs	
AgentDetails	Company	LinkField	UniqueRec	rAgentDetails rCompany	
AgentComments	Company	LinkField	UniqueRec	rAgentComments rCompany	yes
AgentContacts	Company	LinkField	UniqueRec	rAgentContacts rCompany	
AgentContComments	Company	LinkField	UniqueRec	rAgentContComments rCompany	
AgentDocs	Company	LinkField	UniqueRec	rAgentDocs rCompany	
OneRecForm	Company	LnkFld	UniqueRec	rOneRecForm rCompany	
Countries	Company	LinkField	UniqueRec	rCountries rCompany	

Installer for DataEase

(fig 5)

The screenshot shows a software window titled "Data Consultancy" with a sub-header "System Relationships". The window contains the following sections:

- Related Tables:**
 - Records in: are related to records in:
 - based on the following fields being equal (define at last one set of fields)
 -
 -
 -
- Options:**
 - Unique Relationship Names - records in each Table can be referenced as :
 - Referential Integrity - the effect a change to Main form key field has on Subform key :

Buttons: "Save Changes" (top right), "Export Record" (bottom center).

Installer for DataEase

CDF File Selection

The CDF data export function works in the same way as the *Relationships Export Facility* and creates a Tilde (~) separated export file called *CDF.txt* in the Installs folder. (see fig 6 & 7 below)

(fig 6)

Function Name	Library Name	Description	Export
Rounding	RNDWIN.DLL	Round with a constant other than .5	yes
Message	MsgBox.DLL	Custom Message Dialog & Processing	
MsgBeep	MsgBox.DLL	Issues a System Beep Only	
FileExecCDF	File_CDF.DLL	Pass String to Windows WinEXEC Function	
PlayVideo	PLAYVID.DLL	Immediately plays an AVI file.	yes
KeyMacro	DEMACRO.DLL	Executes Keystroke Macros	
PadChar	STRFUNC.DLL	Inserts a character string n times	
StripChar	STRFUNC.DLL	Strips specified character(s)	yes
PasteFromClip	STRFUNC.DLL	Paste Clipboard Contents	
CopyToClip	STRFUNC.DLL	Copy a string to the Clipboard	
JoinStrings	STRFUNC.DLL	Join up to 10 Strings or Values	
Convert	STRFUNC.DLL	Converts between character & Decimal	
FileRead	STRFUNC.DLL	Positionally reads characters from file	yes
FileWrite	STRFUNC.DLL	Writes strings into a file.	
FreeDiskSpace	OSFUNC.DLL	Determines free space on current disk	
IsFile	OSFUNC.DLL	Determines if a file exists	
GetCurrentDiskLetter	OSFUNC.DLL	Determines current disk letter	
GetSizeOf	OSFUNC.DLL	Returns Size of one or more files	
GetCurrentDirName	OSFUNC.DLL	Returns the name of current directory	
OSVersion	OSFUNC.DLL	Returns the Operating System version	
CopyAFile	OSFUNC.DLL	Copies a file	
RenameFile	OSFUNC.DLL	Renames a File	
ChangeDir	OSFUNC.DLL	Changes the Current Directory	
MakeDir	OSFUNC.DLL	Makes a new directory	

(fig 7)

Description Template

Function Name: StripChar

Description: Strips specified character(s)

Cdf Library Name: STRFUNC.DLL

Return Type: String

Parameters

Name:	Type:	Name:	Type:
1. Target String	String	6.	
2. Strip Character(s)	String	7.	
3.		8.	
4.		9.	
5.		10.	

Export Record:

Installer for DataEase

Terms and Conditions

Installer for DataEase

Copyright (c) 2003 – 2009 by Data Consultancy
All rights reserved.

Restrictions

You are prohibited from selling, renting, leasing, loaning, or donating any part of the program and documentation without specific advance agreement between yourself and Data Consultancy. You are prohibited from redistributing the registered version of the program by any method. You are free to modify the application for your sole purpose. You are prohibited from permitting anyone else from undertaking any of the above actions.

Ownership Rights

Data Consultancy owns and retains all copyrights, patents, trade secret rights, trademarks and intellectual property rights to Installer for DataEase. Use of the software does not grant you any right to the intellectual property in the product.

Disclaimer of Warranty

Installer for DataEase is supplied "as is" and without warranties as to performance of merchantability or any other warranties whether expressed or implied.

Good data processing procedure dictates that any program be thoroughly tested on a test database application first before relying on it. The user must assume the entire risk of using the program. Any liability of the seller will be limited exclusively to product replacement.

Usage of the program implies that the owner has accepted the above terms and conditions.

Customer support can be obtained via email at techsupport@dataconsultancy.co.uk